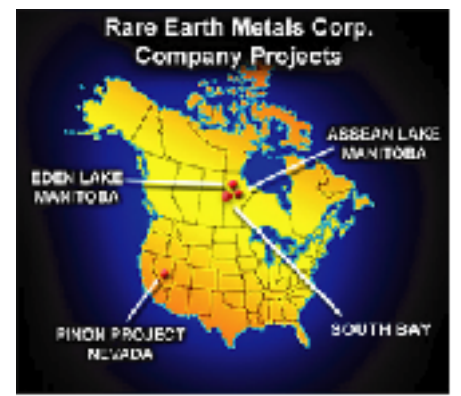
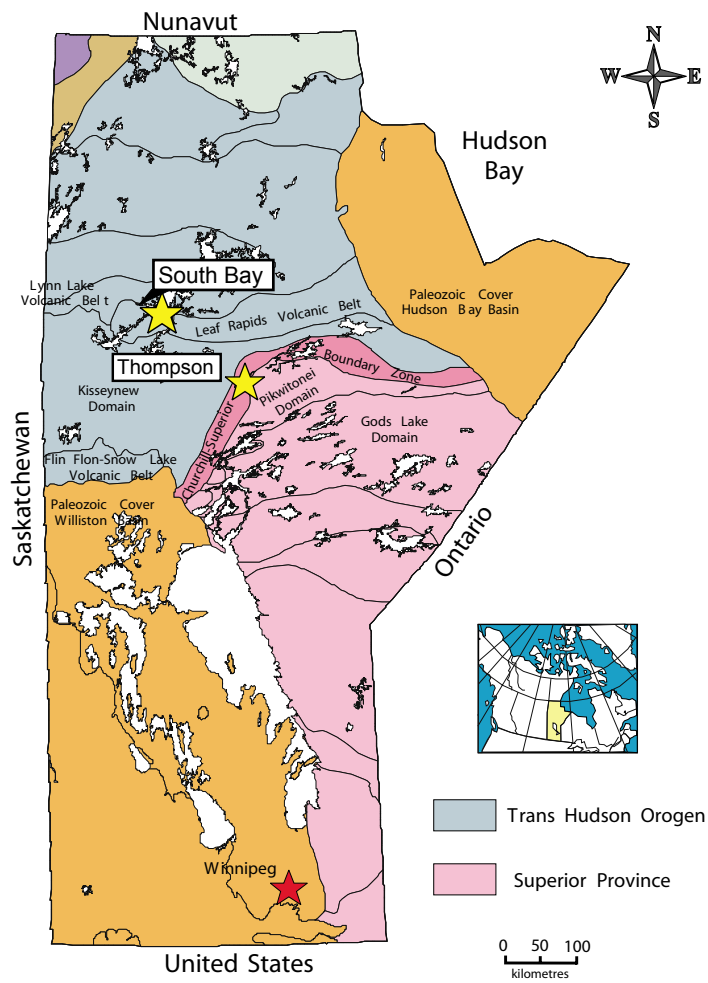


RARE EARTH METALS CORP.

South Bay, Manitoba Ni-Cu-Co PGE Discovery



Trade Symbol **REM.V**
www.rareearthmetals.net
 1-866-816-0118



Geology

- New Nickel Exploration Belt.
- Nickel Values at surface of up to 3.6% Ni
- Mineralization style comparable to magmatic-sulphide nickel deposits.
- Favourable Regional Geology (Sulphidic Meta-Sediments & Mafic units)

Project Logistics

- 100% Option on a Large Land Package (75 square kilometers).
- Excellent infrastructure including Power, All Season Highway
- 300 km drive to INCO's Nickel Smelter at Thompson, Manitoba

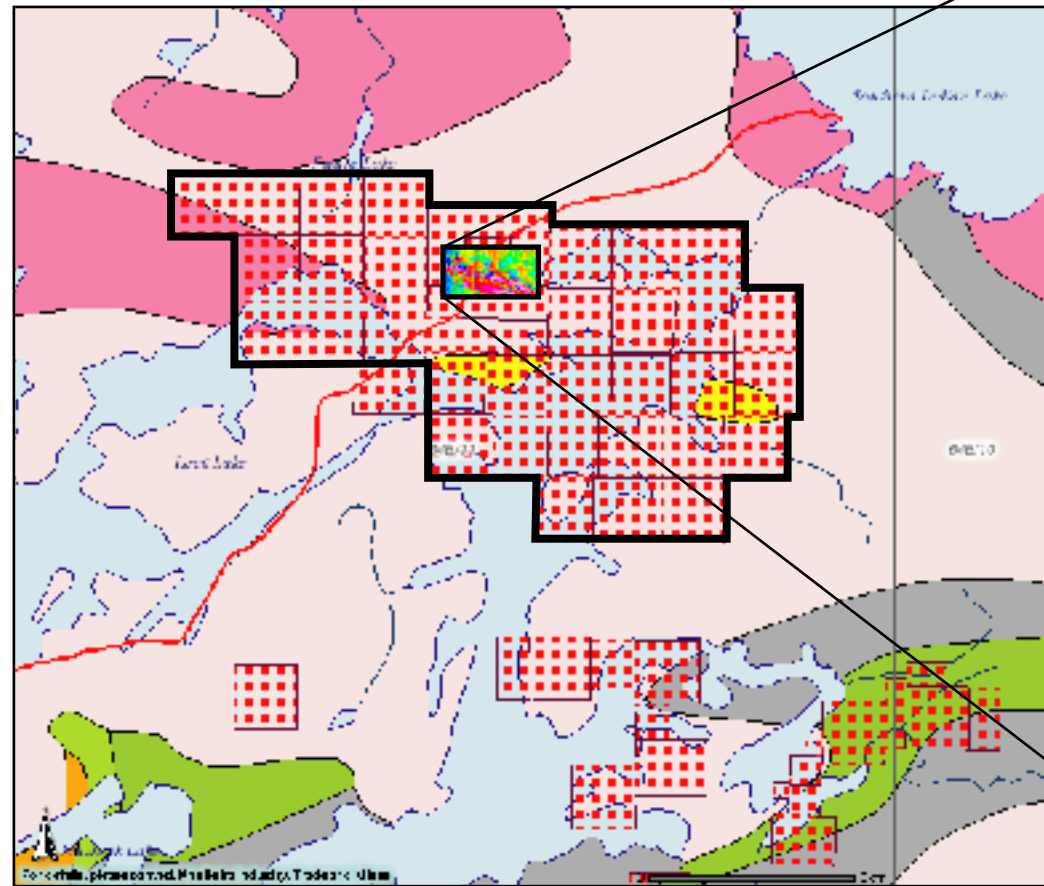
Initial Work Program

- 2 square km grid (44 line km) surrounding the discovery outcrop completed.
- Detailed Geologic Mapping
- Walking Magnetic and HLEM Geophysical Surveys
- Tag Alder Bio-geochemical survey.
- Drill target possibilities identified within 1 km of the discovery.

Discovery Roadcut Grab Sample High Lights

Sample#	Ni %	Cu %	Co ppm	Pd ppb	Pt ppb	Au ppb	S %	S:Ni Tenor
13901	1.29	4.99	362	348	306	27	11.5	8.9
13905	3.61	0.10	1110	987	404	203	18.6	5.2
13906	2.49	0.37	747	640	370	134	15.6	6.3
13908	3.10	0.08	890	694	196	120	13.6	4.4
13909	2.30	0.65	542	786	458	140	12.7	5.5
139010	2.25	0.23	601	1650	214	326	11.4	5.1
139011	2.88	0.18	862	934	350	188	12.9	4.5

Manitoba Regional



South Bay Claim Group

